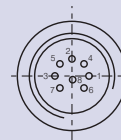


Pin configuration for ECI 24.42-CD

Pin connection (Motor plug)

Pin 1	+Ub	Supply voltage
Pin 2	GND	Ground
Pin 5	A	Operating mode
Pin 4	B	Operating mode

Pin 3	S+	Set value input
Pin 6	S-	Ground set value input
Pin 7	ACTUAL	ACTUAL Speed value
Pin 8	GND_IN	Ground I/O



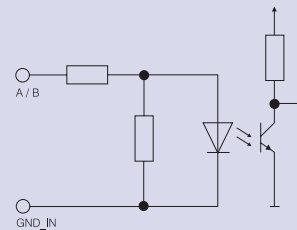
Corresponding mating connector:
(Binder Series 423)
Straight plug ebm-papst
Order No. 992 0370 004

1. Control inputs (galvanically isolated)

A	B	
0	0	Power output stage disabled
0	1	Counterclockwise rotation
1	0	Clockwise rotation
1	1	Brake function*

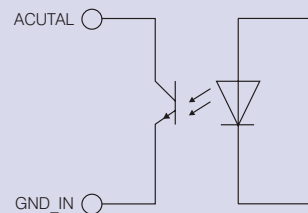
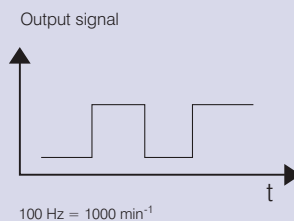
low (0) 0 ... 5 V
high (1) 15 ... 30 V

*Brake function:
The braking function serves to slow down the motor only. It has no holding brake function for static duty.

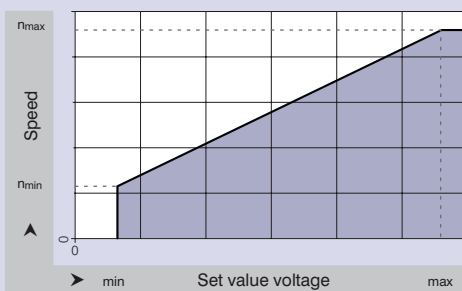


2. ACTUAL speed value output (galvanically isolated)

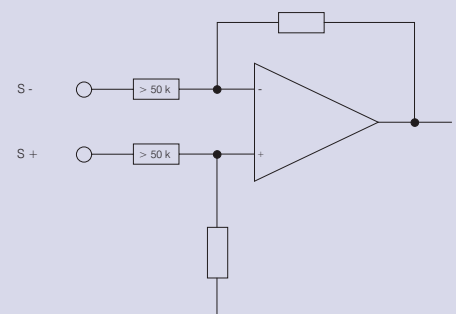
Version:
Open Collector
 $U_{ext. max} = 30 V$
 $U_{CESAT} = 0.5 V$
 $I_{CMAX} = 5mA$



3. Set value input



Speed setting for speed control via set value voltage (interface 0 ... 10 V DC).
Differential Input.



For detailed information, please refer to the corresponding specification data sheets.
The instructions and safety notes in the operating manual must be kept at all times.