

### Permissible S1 operating characteristics

#### Order No. 937 5432 610

|                                      |     |      |      |      |
|--------------------------------------|-----|------|------|------|
| Speed $n$ ( $\text{min}^{-1}$ )      | 300 | 1000 | 2000 | 3300 |
| Torque $M$ ( $\text{mNm}$ )          | 225 | 225  | 225  | 240  |
| Input power $P_{s1 \text{ max}}$ (W) | 31  | 50   | 70   | 115  |

### Pin connection

|        |        |                    |
|--------|--------|--------------------|
| Yellow | ACTUAL | ACTUAL Speed value |
| White  | A      | Input A            |
| Grey   | B      | Input B            |
| -      | C      | Not connected      |

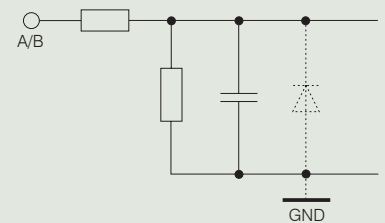
|       |     |                  |
|-------|-----|------------------|
| Green | S+  | Set value        |
| -     | S-  | Ground set value |
| Black | GND | Ground           |
| Red   | +Ub | Supply voltage   |

### 1. Control inputs

| A | B |                           |
|---|---|---------------------------|
| 0 | 0 | Power stage disabled      |
| 0 | 1 | Counterclockwise rotation |
| 1 | 0 | Clockwise rotation        |
| 1 | 1 | Brake function*           |

|          |              |
|----------|--------------|
| low (0)  | 0 ... 0.8 V  |
| high (1) | 2.4 ... 30 V |

\* Brake function:  
The braking function serves to slow down the motor only. It has no holding brake function for static duty.

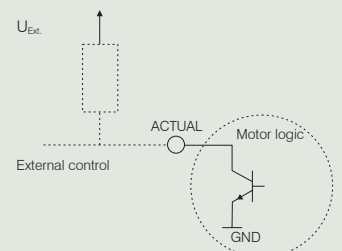
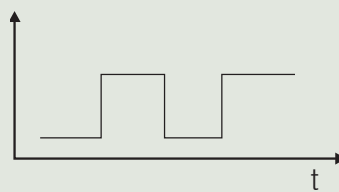


### 2. Actual speed value output

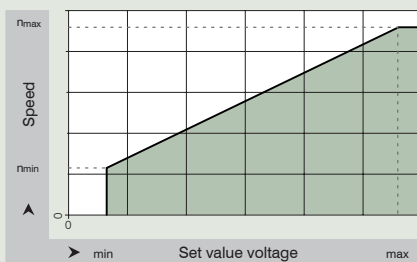
#### Version:

Open Collector  
 $U_{\text{ext. max}} = 30 \text{ V}$   
 $U_{\text{CESAT}} = 0.5 \text{ V}$   
 $I_{\text{CMAX}} = 5 \text{ mA}$

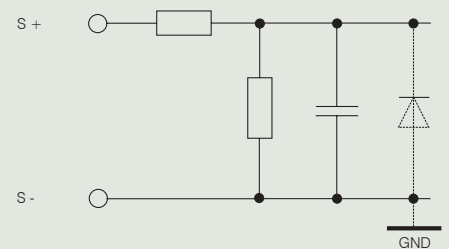
Output signal



### 3. Set value



Speed setting for speed control via set value voltage (interface 0 ... 10 V DC).



For detailed information, please refer to the corresponding specification data sheets. The instructions and safety notes in the operating manual must be kept at all times.