

Permissible S1 operating characteristics

Order No. 937 5414 800

Speed n (min^{-1})	300	1000	2000	4000	5000
Torque M (mNm)	80	80	80	90	90
Input power $P_{S1 \text{ max}}$ (W)	12	19	29	56	80

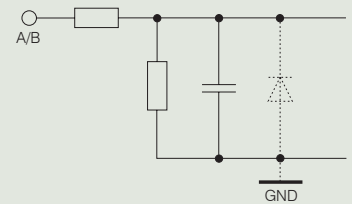
Pin connection

Yellow	Ist	ACTUAL Speed value
White	A	Input A
Green	S+	Set value input
Black	GND	Ground
Red	+Ub	Supply voltage

1. Control inputs

A	
0	Counterclockwise rotation*
1	Clockwise rotation*
low (0)	0 ... 0.8 V
high (1)	2.4 ... 30 V

*Change in direction of rotation only allowed at standstill!

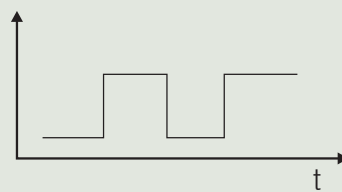


2. Actual speed value output

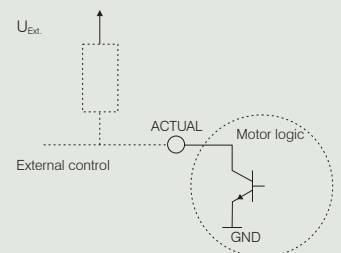
Version:

Open Collector
 $U_{\text{ext. max}} = 30 \text{ V}$
 $U_{\text{CESAT}} = 0.5 \text{ V}$
 $I_{\text{CMAX}} = 5 \text{ mA}$

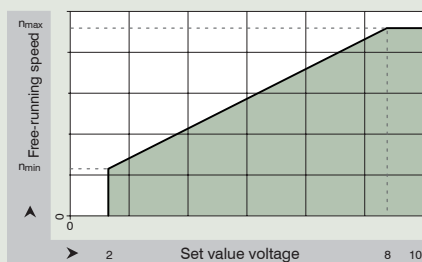
Output signal



100 Hz = 1000 min^{-1}

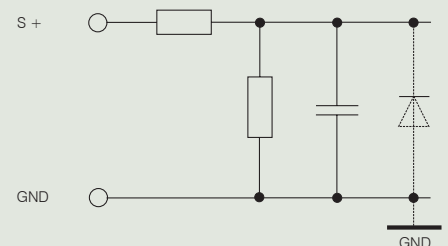


3. Set value input



Speed setting for open loop speed control via control voltage (0 ... 10 V DC).

interface:
 $< 2 \text{ V} = 0\% \text{ PWM}$
 $8 \text{ V} = 100\% \text{ PWM}$



For detailed information, please refer to the corresponding specification data sheets. The instructions and safety notes in the operating manual must be kept at all times.