

### Permissible S1 operating characteristics

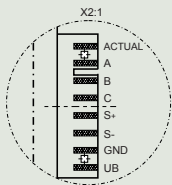
#### Order No. 937 5414 622

Speed $n$ ( $\text{min}^{-1}$ )	300	1000	2000	4000	6000
Torque $M$ (mNm)	90	90	90	100	100
Input power $P_{S1 \text{ max}}$ (W)	14	22	33	63	88

#### Order No. 937 5414 620

Speed $n$ ( $\text{min}^{-1}$ )	300	1000	2000	4000
Torque $M$ (mNm)	110	110	120	130
Input power $P_{S1 \text{ max}}$ (W)	14	23	40	70

### Pin connection



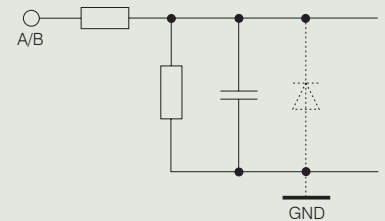
ACTUAL	ACTUAL Speed value	S+	Set value
A	Input A	S-	Ground set value
B	Input B	GND	Ground
C	Not connected	+UB	Supply voltage

### 1. Control inputs

A	B	
0	0	Power stage disabled
0	1	Counterclockwise rotation
1	0	Clockwise rotation
1	1	Brake function*

low (0) 0 ... 0.8 V  
high (1) 2.4 ... 30 V

\* Brake function:  
The braking function serves to slow down the motor only. It has no holding brake function for static duty.

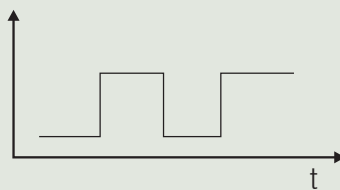


### 2. Actual speed value output

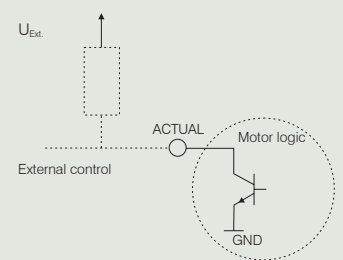
#### Version:

Open Collector  
 $U_{\text{ext. max}} = 30 \text{ V}$   
 $U_{\text{CESAT}} = 0.5 \text{ V}$   
 $I_{\text{CMAX}} = 5 \text{ mA}$

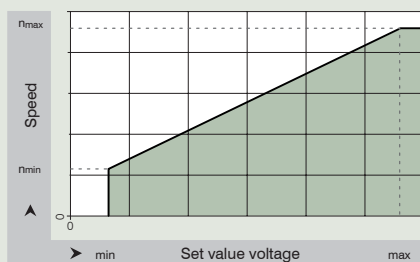
Output signal



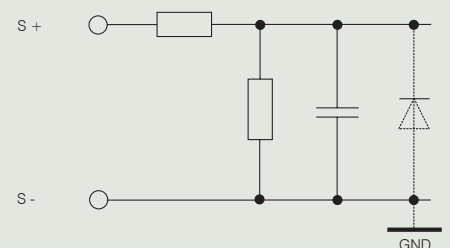
100 Hz = 1000  $\text{min}^{-1}$



### 3. Set value



Speed setting for speed control via set value voltage (interface 0 ... 10 V DC).



For detailed information, please refer to the corresponding specification data sheets. The instructions and safety notes in the operating manual must be kept at all times.