

Permissible S1 operating characteristics

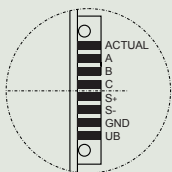
Order No. 937 4310 600

Speed n (min^{-1})	300	1000	2000	4000	5000
Torque M (mNm)	40	40	46	45	45
Input power $P_{S1 \text{ max}}$ (W)	7	11	19	30	45

Order No. 937 4310 610

Speed n (min^{-1})	300	1000	2000	4000
Torque M (mNm)	40	45	45	45
Input power $P_{S1 \text{ max}}$ (W)	10	15	20	30

Pin connection



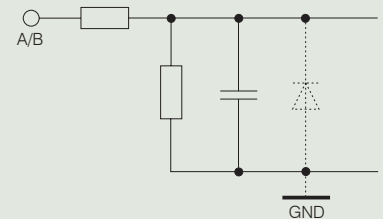
ACTUAL	ACTUAL Speed value	S+	Set value
A	Input A	S-	Ground set value
B	Input B	GND	Ground
C	Not connected	+UB	Supply voltage

1. Control inputs

A	B	
0	0	Power stage disabled
0	1	Counterclockwise rotation
1	0	Clockwise rotation
1	1	Brake function*

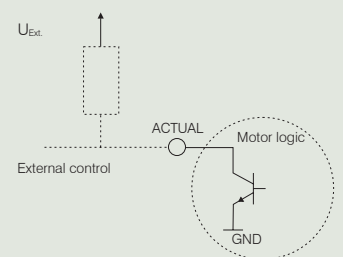
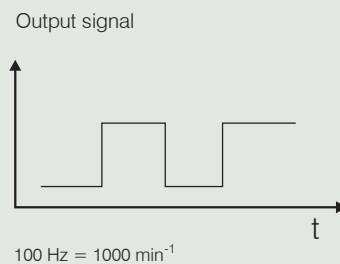
low (0) 0 ... 0.8 V
high (1) 2.4 ... 30 V

* Brake function:
The braking function serves to slow down the motor only. It has no holding brake function for static duty.

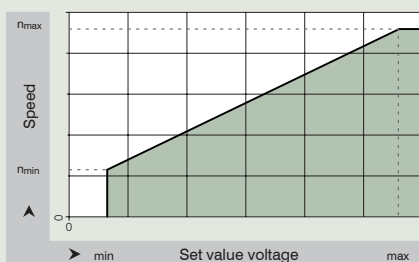


2. Actual speed value output

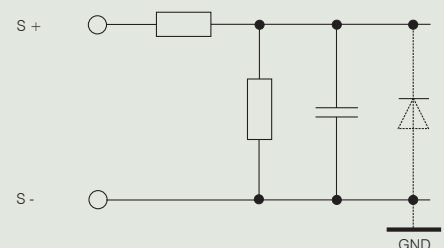
Version:
Open Collector
 $U_{\text{ext. max}} = 30 \text{ V}$
 $U_{\text{CESAT}} = 0.5 \text{ V}$
 $I_{\text{CMAX}} = 5 \text{ mA}$



3. Set value



Speed setting for speed control via set value voltage (interface 0 ... 10 V DC).



For detailed information, please refer to the corresponding specification data sheets. The instructions and safety notes in the operating manual must be kept at all times.