

# Pin configuration for ECI 42.40-C

## Pin connection

Pin 1	$U_B$
Pin 2	Direction of rotation
Pin 3	GND
Pin 4	ACTUAL speed value
Pin 5	Set value

## Pin configuration

### Plug Type: Company Lumberg:

Lumberg Type RKT 5-228/...m (direct coupling)

RKT 5-228/2m

ebm-papst Order No. 992 0160 001

Type RKWT 5-228/...m (angle coupling)

Type FST 5-FKT 5-293/...m (Fixcon plug / coupling)

## 1. Control input rotation (Pin 2)

Pin 2

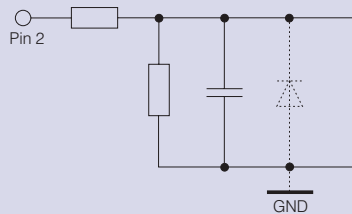
1 Counterclockwise rotation

0 Clockwise rotation

low (0) 0 ... 0.8 V

high (1) 2.4 ... 28 V

Direction of rotation viewed on shaft



## 2. Actual speed value output (Pin 4)

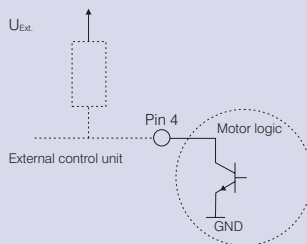
### Version:

Open Collector

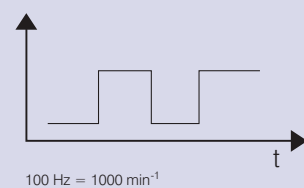
$U_{ext. max} = 30 V$

$U_{CESAT} = 0.5 V$

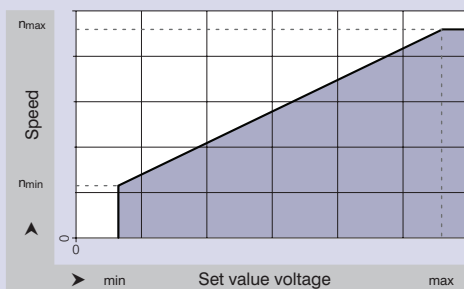
$I_{CMAX} = 5mA$



Output signal



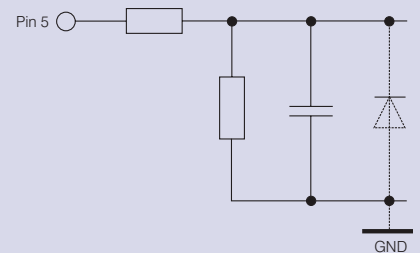
## 3. Set value input (Pin 5)



Speed setting for speed control via set value voltage interface 0 ... 10 V DC.  
(1 V = 1 000 U/min)

By set value voltage  $< 0.2 V$  the brake function will be activated.

The braking function serves to slow down the motor only. It has no holding brake function for static duty.



For detailed information, please refer to the corresponding specification data sheets.  
The instructions and safety notes in the operating manual must be kept at all times.